

## DATA SHEET

### Galvanised Corrugated Sheets



The sheets are ideal for a variety of uses. They can be used on industrial buildings as well as agricultural buildings. They can be used on the interior, for partitioning or on the exterior for Roofing and side cladding.

#### **SHEET LENGTHS:**

10ft sheets are available EX STOCK.

#### **SHEET WIDTH:**

The sheets are available with a 30" cover width, when one corrugation is overlapped. We refer to this profile as a 10 x 3" corrugation. The depth of the corrugation is 18mm deep and they are 76mm apart.

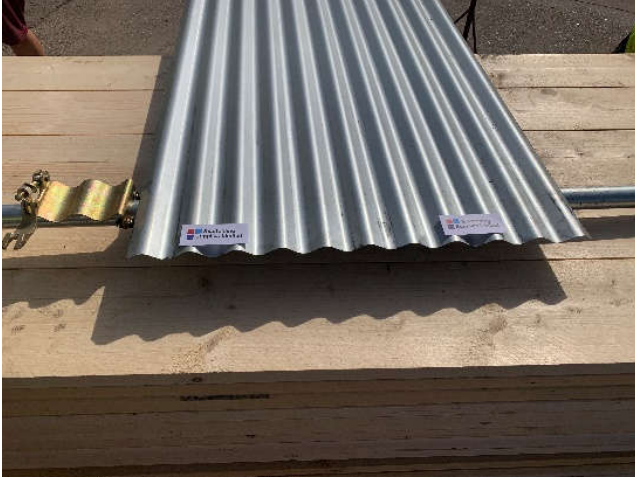
#### **SHEETS THICKNESS:**

The standard sheet thickness held in stock is 24swg (0.60mm thick).

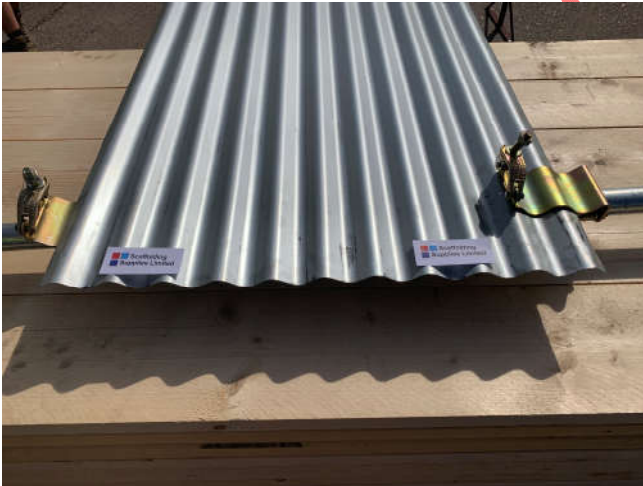
**When using CI Sheets or any sheeting material please check re wind loadings, if you are not sure ASK !**

## FIXING INSTRUCTIONS:

1. Fix the first sheeting coupler at the end of the lower / first tube.



2. Offer the sheet up to the first coupler, then attach the next coupler against the sheet



3. Add additional sheets, adding couplers along the lower tube length until the roof area is covered



4. Once the sheets are in place, attach the top tube to the couplers, this will “ trap “ the sheets in place.



5. Close up of sheet between top and lower tubes



6. Completed section of roof.



**WARNING:** Please ensure you have checked wind loadings etc. before using any sheets